

Quick Installation Guide for wifiCAMit

1. wifiCAMit packing list :

Before you start installing wifiCAMit, please verify that the package contains the following items:

- One Set of wifiCAMit IP Camera
- 1x RJ45 Network Cable
- 1x Power Adaptor
- CD with Setup Software, User's Manual and this Quick Installation Guide
- Desktop / Wall & Ceiling Mount Strut



NOTE: Please notify your sales representative immediately if any items listed above is missing or damaged.

2. Connecting the wifiCAMit to your existing router

- 1) Connect wifiCAMit to Ethernet port of your existing router using the RJ45 cable.
- 2) Connect the power cable to RJ22 jack of the wifiCAMit.
- 3) Insert CD to your PC connecting to the same router to install eCAMit Deluxe AP.
(Please refer to section 2.)
- 4) Execute eCAMit Deluxe AP, the camera will automatically show up on Camera List.
- 5) Double click the camera to view.
- 6) Personalize your camera:

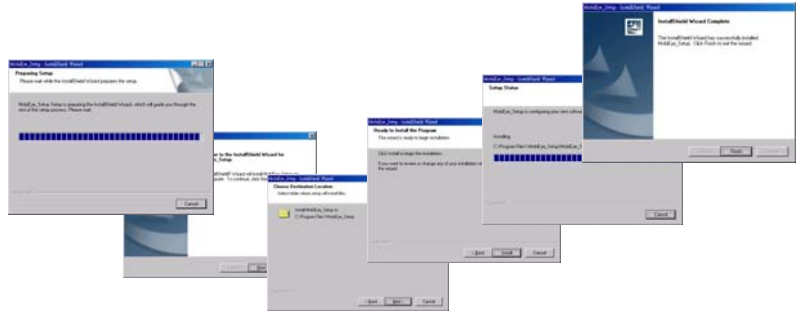
Move the mouse to the camera and click on the right button to set:

1. Public Password (Default is blank. Keep it blank if you would like the camera to be open to the public.)
2. Supervisor Password (Default is blank. It is suggested to set this level of password.)
3. Camera Name (Default is "my camera".)



3. Install the eCAMit Deluxe Software

- 1) Insert CD and install eCAMit Deluxe to your PC or download the AP from: <http://www.3jtech.com/downloads.htm> for T series IP cameras. For CD installation, please click on Install "eCAMit Deluxe" and follow the wizard. For Internet downloaded software, please unzip the files, and execute file **Setup.exe** and follow the wizard.



-  **NOTE:** If you have eCAMit Deluxe already on your PC, you do not need to install the software again.

▪ Switch the Wired/Wireless Mode for the Camera

The default mode of wifiCAMit is wired. The camera needs to be switched into the wireless mode if the user would like to be independent of the RJ45 cable. The procedures of the wireless setup are as follows:

- 1) Run the eCAMit Deluxe software.
- 2) Click the "**Settings**" button next to the image window.
- 3) Please move to "**Device Setting**" stage by pressing >> button to do the wireless settings of the camera.

No.	Camera ID	Camera Name	Status	Camera Type
1	B5112607	I system	Local Camera	veCAMit T2 by one
2	B5A40033	eCAMIT1 with Power Box	Local Camera	eCAMit T1
3	B5123456	LATaa_x1	Local Camera	veCAMit T2 by one
4	B9114099	James-B9104099	Local Camera	wifiCAMT_II
5	B5333444	Elkron Jatsai	Local Camera	Unknown type
6	B5114111	3JTECH	Connected	wifiCAMT_II
7	B5000003	B5000003	Local Camera	wifiCAMT_II



Device Setting

Activate Device #0. (Normal: Close)

WiFi Settings :

Infrastructure Ad_hoc
 None WEP WPA
 64 bit 128 bit

SSID :
 (Max 32 char)
 Wep Key :
 5Char/10Hex

Enable Ping Enable PreTrigger Image

- 4) In WIFI settings section, please select your desired way of wireless network connection between **Inferstructure** and **Ad_hoc** modes. Then, choose the encryption algorithm you would like among **None**, **WEP** or **WPA**, and the corresponding proper password length as well.

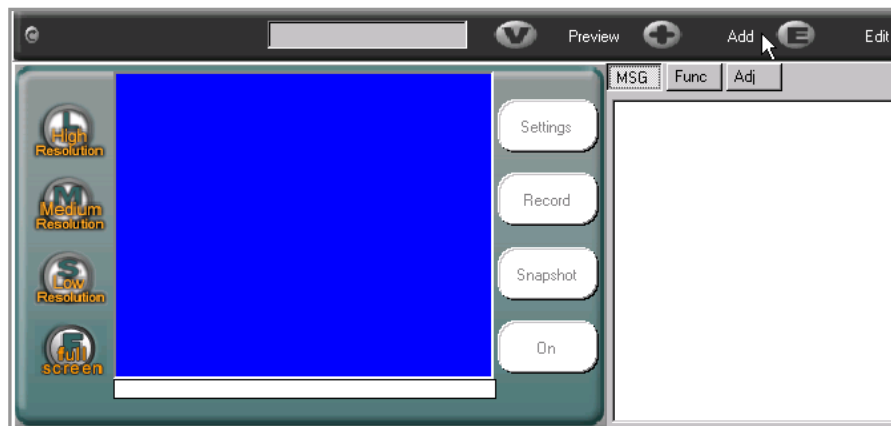
- 5) Please input the SSID and WEP key belonging to the wireless Access Point / Router accordingly.
- 6) Click the "**Finish**" button to save the new settings and exit the setting window.
- 7) Remove the power cable of the camera and RJ45 cable.
- 8) Switch the button located at the left side of the camera (See the figure below) into "**Wireless**" position and plug in the power cable again.

9) After completing the above settings, the user will be able to view and set up the camera wirelessly.

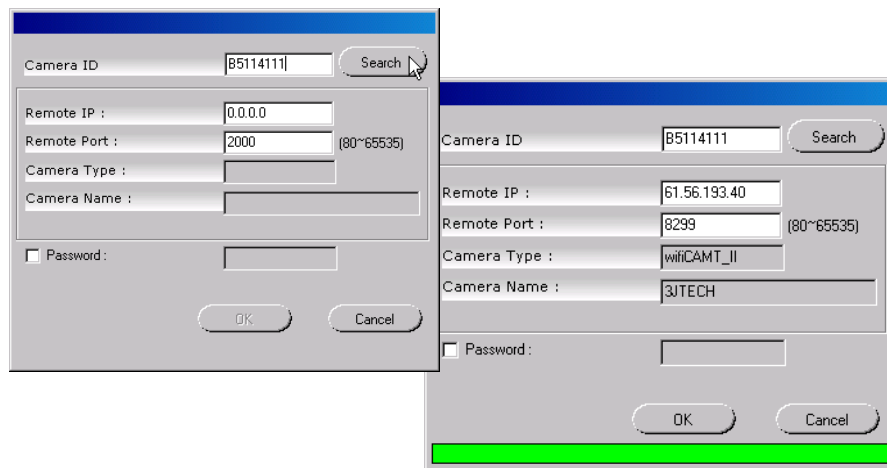


▪ **View Camera via eCAMit Deluxe**

- 1) To view the camera, please start **eCAMit Deluxe** software. It can be found on Start Menu.
- 2) Select the language you would like, then, the camera in the local LAN will be displayed automatically on Camera List. You also can click on **“Add”** function if your camera fails to appear.



3) When the add window appears, please enter the camera ID. (Camera ID can be found on the back of your wifiCAMit unit.) Click on **“Search”** when done, if your camera is online, the details should appear automatically. Click **“OK”** to add this camera searched to Camera List.



- 4) Double click on the entry belonging to the camera you would like to view.

