

eCAMit T Mobile Suite

User's Guide

Report Version: 1.0
Date: November 24 , 2004

3JTech Co., Ltd.
342 Fu-Hsing N. Rd., 2F
Taipei, Taiwan
Tel: +886-2-2500 6919
e-mail: info@3jtech.com.tw

Revision History

Version	Date	Changes
1.0.0	November 24, 2004	First release of eCAMit T mobile suite

Table of Contents:

Revision History	2
TABLE OF CONTENTS:	2
1. INTRODUCTION	3
2. SYSTEM REQUIREMENTS	4
3. SIEMENS CX65 JAVA MIDLET INSTALLATION.....	4
4. ECAMIT T MOBILE SUITE INSTALLATION.....	6
5. USING ECAMIT T MOBILE SUITE	6

1. Introduction

Thank you for choosing 3JTech products!!! With the fast advancement on 3C technologies today, mobile phones can do much more than expected. You will be amazed what 3J Tech engineering team brings you; The eCAMit T mobile suite. eCAMit T mobile suite is a software specially designed for mobile phones to view 3J Tech's eCAMit T cameras. You will now be able to view your 3J security cameras through your mobile phones' GPRS connection. This will provide you with greater competitive ability / security as you will now be able to view the camera on spot anytime, anywhere.

2. System Requirements

Colored Mobile Phone
Java Supported (J2ME)
CLDC 1.0 or above
GPRS connection

3. Siemens CX65 Java Midlet Installation

This is a demonstration installation using Siemens CX65 cell phone.

1. Please select the Web Access in the main menu.



2. Select **Bookmark**.



3. Select **Add New**.



4. Select **Bookmark**.



5. Please now edit the bookmark. The link for the software is <http://ftp.3jtech.com.tw:8080/eCAMitT/eCAMitT.jar>
When done, please press **Complete**



6. Please give the new bookmark a name. In this case, eCAMitT



7. Save the bookmark.



8. Select the Bookmark created and allows GPRS access. The software should start downloading.



4. eCAMit T Mobile Suite Installation

To install eCAMit T Mobile Suite, please have your phone GPRS online ready, and create a bookmark on your mobile phone. The address is as follows:

<http://ftp.3jtech.com.tw:8080/eCAMitT/eCAMitT.jar>

After you created the bookmark, please now activate your GPRS and link to the bookmark. If everything is properly setup, your cell phone should request your permission to download eCAMit T Mobile Suite software. Please grant the authorization, install the software, and start view your eCAMit T on the move.

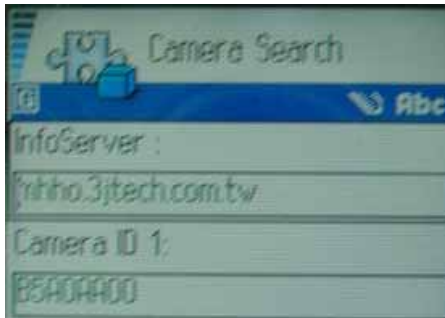
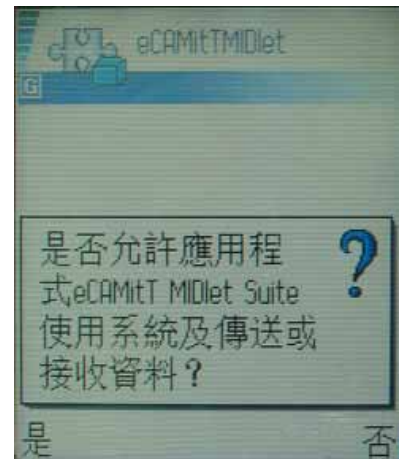
Note: The bookmark created in your cell phone is case sensitive.

5. Using eCAMit T Mobile Suite

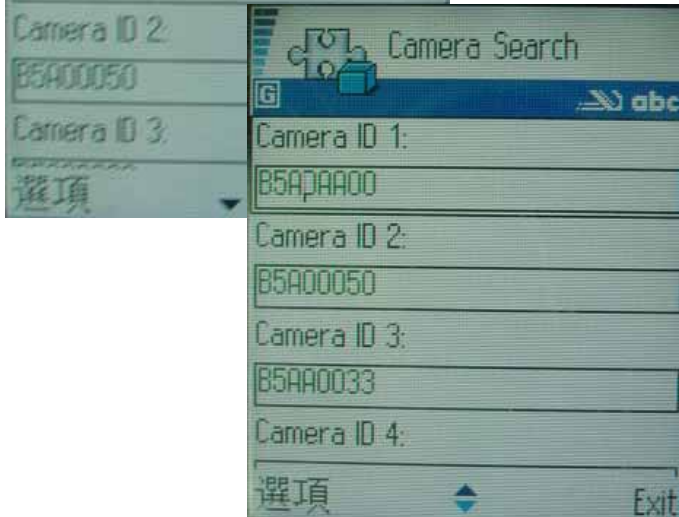
1. Please execute the eCAMit T Mobile Suite is installed on your mobile phone.



2. When the midlet suite is executed, mobile phone shall ask your permission to connect to the internet. Please grant the request.

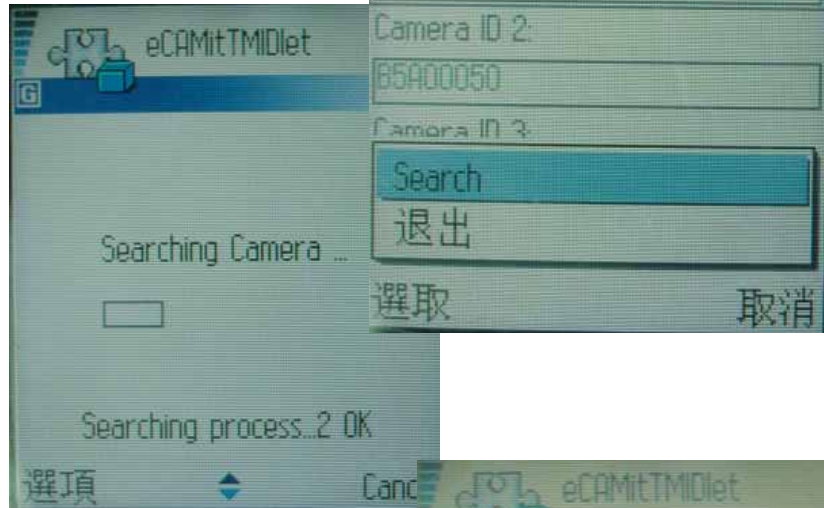


3. When the system is loaded, you will have to insert the infoServer and the camera ID of your camera. This is so that your mobile phone knows which infoServer to search, and search your camera via its identification number.



You can bookmark up to 4 camera of your choice.

4. When you have identified your camera, you can know link to your camera. Please press **Option** and select **Search** to begin the search for your camera.



5. If the camera is password protected, you will be asked to insert the correct password before the camera begins to feed the images. When the password is entered, please select **OK**. **Please note: the password is case sensitive.**
6. The camera will start feeding after the password check is correct.

