

Quick Installation Guide for wifiCAMit_CS

1. wifiCAMit_CS packing list :

Before you start installing wifiCAMit_CS, please verify that the package contains the following items:

- One Set of wifiCAMit_CS IP Camera
- 1x RJ45 Network Cable
- 1x Power Adapter
- CD with Setup Software, User's Manual and this Quick Installation Guide
- Wall & Ceiling Mount Strut



NOTE: Please notify your sales representative immediately if any items listed above is missing or damaged.

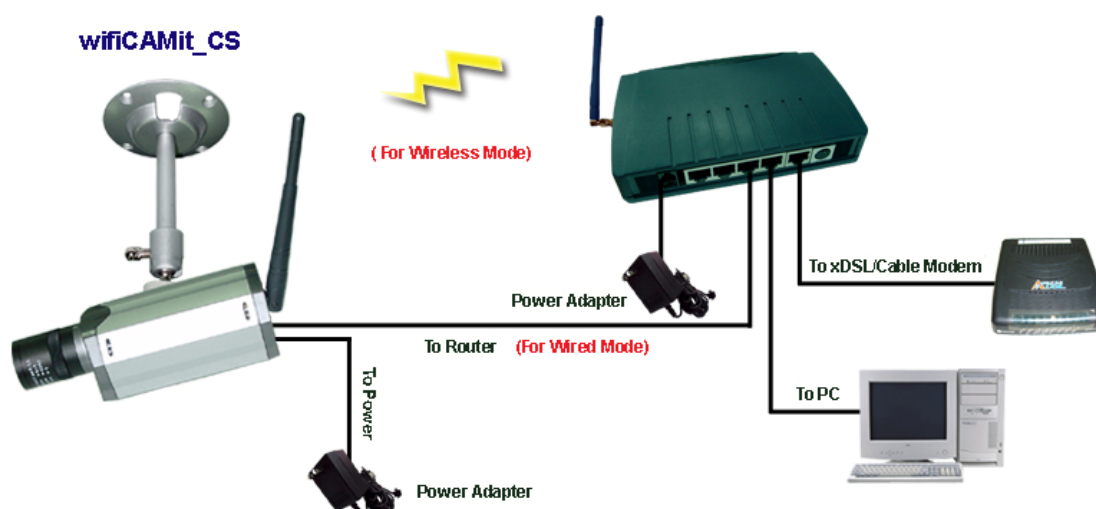
wifiCAMit_CS has wired and wireless operation modes. The default mode is wired. One would need to set the wireless mode from wired mode. The follows are the installation steps for wired mode.

2. Connecting the wifiCAMit_CS to your existing router

- 1) Connect wifiCAMit_CS to Ethernet port of your existing router using the RJ45 cable.
- 2) Connect the power cable to RJ12 jack of the wifiCAMit_CS.
- 3) Insert CD to your PC connecting to the same router to install eCAMit Deluxe AP.
(Please refer to Section 3.)
- 4) Execute eCAMit Deluxe AP, the camera will automatically show up on Camera List.
- 5) Double click the camera to view.
- 6) Personalize your camera:

Move the mouse to the camera and click on the right button to set:

1. Public Password (Default is blank. Keep it blank if you would like the camera to be open to the public.)
2. Supervisor Password (Default is blank. It is suggested to set this level of password.)
3. Camera Name (Default is "my camera".)

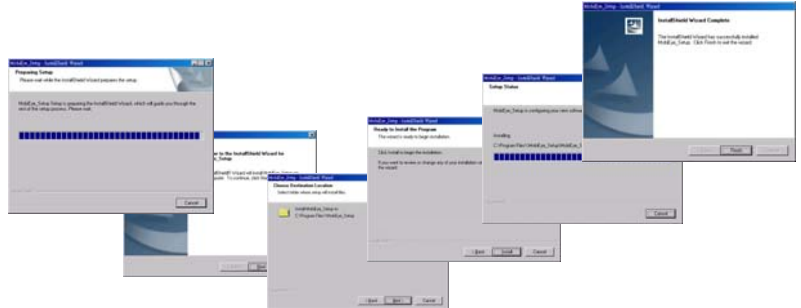




NOTE : wifiCAMit_CS is a plug and play IP camera if you are using a router. If you do not have a router, please skip this section and refer to the Appendix B in wifiCAMit_CS User’s Guide for the advanced network settings. If you are using 3JTech's Dedicated Wifi Router (DWR), please use another Quick Installation Guide: "Quick Installation Guide for wifiCAMit with DWR".

3. Install the eCAMit Deluxe Software

1) Insert CD and install eCAMit Deluxe to your PC or download the AP from: <http://www.3jtech.com/downloads.htm> for T series IP cameras. For CD installation, please click on Install “eCAMit Deluxe” and follow the wizard. For Internet downloaded software, please unzip the files, and execute file **Setup.exe** and follow the wizard.



NOTE: If you have eCAMit Deluxe already on your PC, you do not need to install the software again.

▪ Switch the Wired/Wireless Mode for the Camera

The default mode of wifiCAMit_CS is wired. The camera needs to be switched into the wireless mode if the user would like to be independent of the RJ45 cable. In order to set the WIFI mode, you would need to know the encryption method, SSID and WEP key of your WIFI Access Point. Please refer to your WIFI Access Point User's Manual for these. Usually one could access the Access Point by <http://192.168.1.1> with the administrator password to find out these parameters.

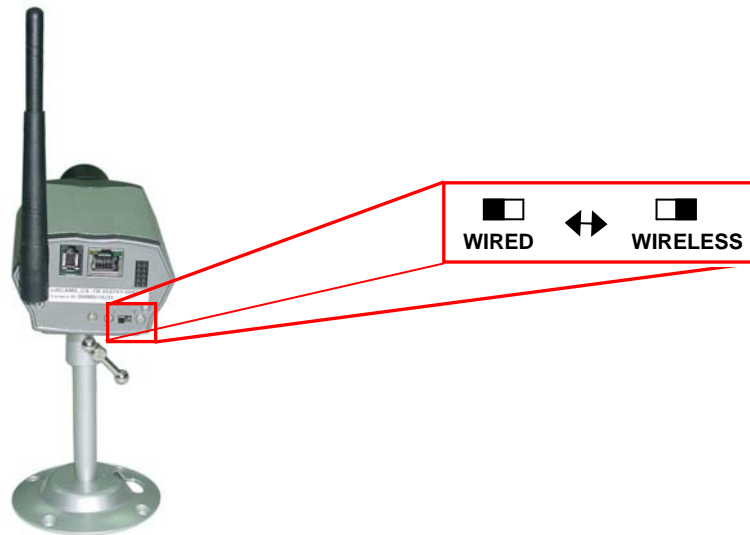
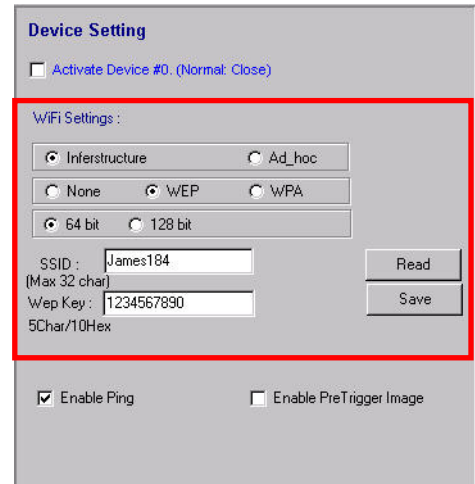
The procedures of the wireless setup are as follows:

- 1) Run the eCAMit Deluxe software.
- 2) Click the “**Settings**” button next to the image window.
- 3) Please move to “**Device Setting**” stage by pressing >> button to do the wireless settings of the camera.

No.	Camera ID	Camera Name	Status	Camera Type
1	B5112607	I system	Local Camera	veCAMit T2 by one
2	B5A40033	eCAMIT1 with Power Box	Local Camera	eCAMit T1
3	B5123456	LATsa_x1	Local Camera	veCAMit T2 by one
4	B5114099	James-B5104099	Local Camera	wifiCAMT_II
5	B5333444	Elkron Jatsai	Local Camera	Unknown type
6	B5114111	3JTECH	Connected	wifiCAMT_II
7	B5000003	B5000003	Local Camera	wifiCAMT_II

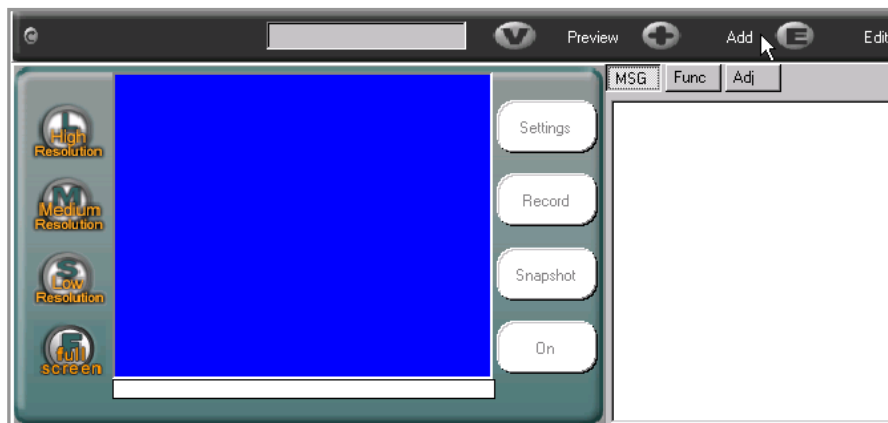


- 4) Since the wifiCAMit_CS is under the Wifi Access Point, one would need to select "Infrastructure"
- 5) Please input the SSID and WEP key according to your wireless Access Point / Router.
- 6) Click the **"Finish"** button to save the new settings and exit the setting window.
- 7) Remove the power cable of the camera and RJ45 cable.
- 8) Switch the button located at the left side of the camera (See the figure below) into **"Wireless"** position and plug in the power cable again.
- 9) After completing the above settings, the user will be able to view and set up the camera wirelessly.

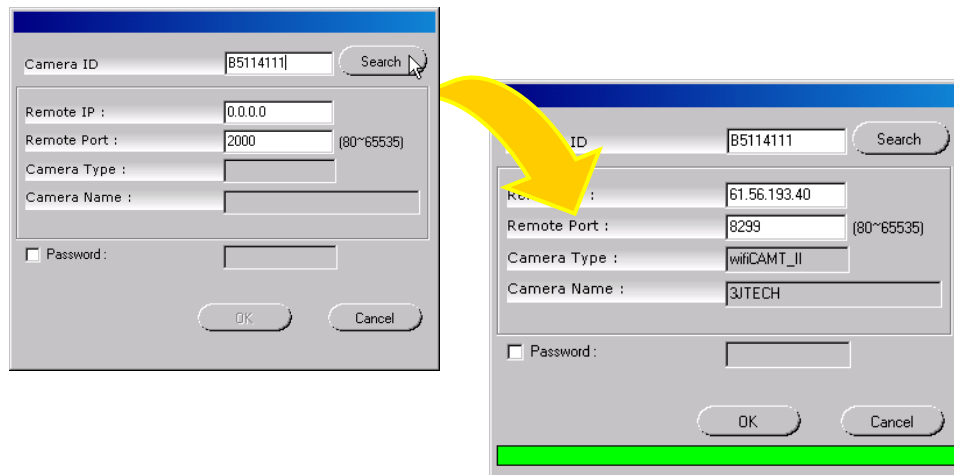


▪ **View Camera via eCAMit Deluxe**

- 1) To view the camera, please start **eCAMit Deluxe** software.
- 2) Select the language you would like, then, the camera in the local LAN will be displayed automatically on Camera List. You also can click on **"Add"** function if the cameras are located remotely and not connected to the same router of the PC running eCAMit Deluxe.



- 3) When the add window appears, please enter the camera ID, which is the last 8 digits of the MAC address of wifiCAMit_CS. (Camera ID can be found on the back of your wifiCAMit_CS unit.) Click on “**Search**” when done, if your camera is online, the details should appear automatically. Click “**OK**” to add this camera searched to Camera List.



- 4) Double click on the entry belonging to the camera you would like to view.

